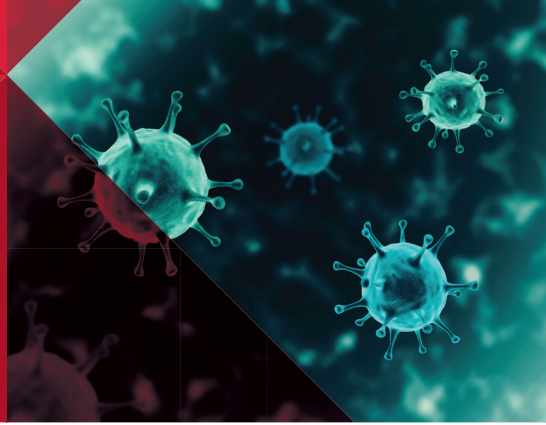


Master of Public Health – Epidemiology



Become a Public Health Leader with SDSU Global Campus



Estimated Cost
\$30,804



Minimum Completion Time
20 Months



Course Format
Online

Learn what it takes to keep our communities safe by earning your Master of Public Health in Epidemiology online through SDSU Global Campus. This graduate program will help you acquire the public health knowledge and leadership skills you need to study and prevent disease, optimize health resource distribution networks, lead clinical trials, conduct sophisticated epidemiologic research, and more.

Learning Outcomes

- Identify the major categories of bias, and propose methods to evaluate and/or reduce their influence on the measures of major interest.
- Select appropriate study designs for population-based epidemiologic research.
- Conduct original research: formulate a research question; prepare and carry out a proposal; present findings both orally and in written form.
- Understand principles of screening for disease and risk factors (including sensitivity, specificity, and predictive values).
- Critically review scientific literature.

Experience the SDSU Global Campus Difference

Accessible Learning

Our coursework is fully online, self-paced, and can be completed in just 20 months, making it ideal for working public health professionals who want to move forward without putting their current careers on hold.

Expert Faculty

Our program is led by the same faculty and lecturers who teach on-campus courses with SDSU's School of Public Health. You'll learn from expert public health practitioners who come from a variety of professional settings such as the County of San Diego HHS Agency, FQHCs, HMOs, and others.

Practical Experience

Apply your online coursework through a supervised field experience with a public health organization in your own community.

Want to Learn More?

For more information, please contact your Student Service Coordinator at **(619) 594-7700** or globalcampus@sdsu.edu.



College of Health and Human Services
School of Public Health

neverstoplearning.net/mphepidemiology